



STAP

SCIENTIFIC AND TECHNICAL
ADVISORY PANEL

*An independent group of scientists that advises
the Global Environment Facility*



Our Team – October 2016



Outline of Presentation

New STAP Reports

Ongoing Work

Issues for GEF Replenishment

Outline of Presentation

New STAP Reports

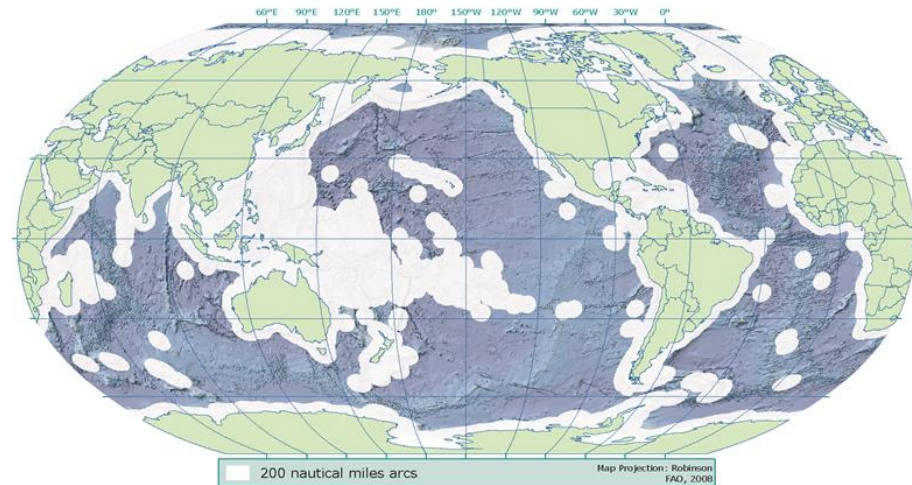
Ongoing Work

Issues for GEF Replenishment

Areas Beyond National Jurisdiction (ABNJ)

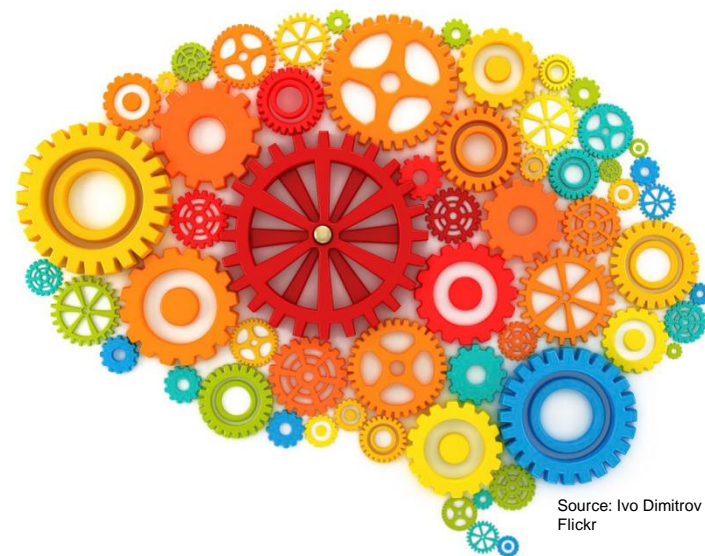
Key Messages to the GEF Partnership:

- Enhance knowledge on ABNJ
- Support high impact demonstration projects
- Support area-based planning and management tools
- Build technical capacity with SIDS and LDCs
- Support countries to implement existing rights & obligations under UNCLOS



Monitoring, Evaluation, and Learning for Climate Change Adaptation (moving from M&E to MEL)

- Start simply, learn by doing, and plan for change
- Allocate sufficient resources for M&E
- Explore synergies between adaptation M&E and development M&E
- Include a focus on long-term outcomes
- Extensive stakeholder engagement from concept through design, implementation, and evaluation



Outline of Presentation

New STAP Reports

Ongoing Work

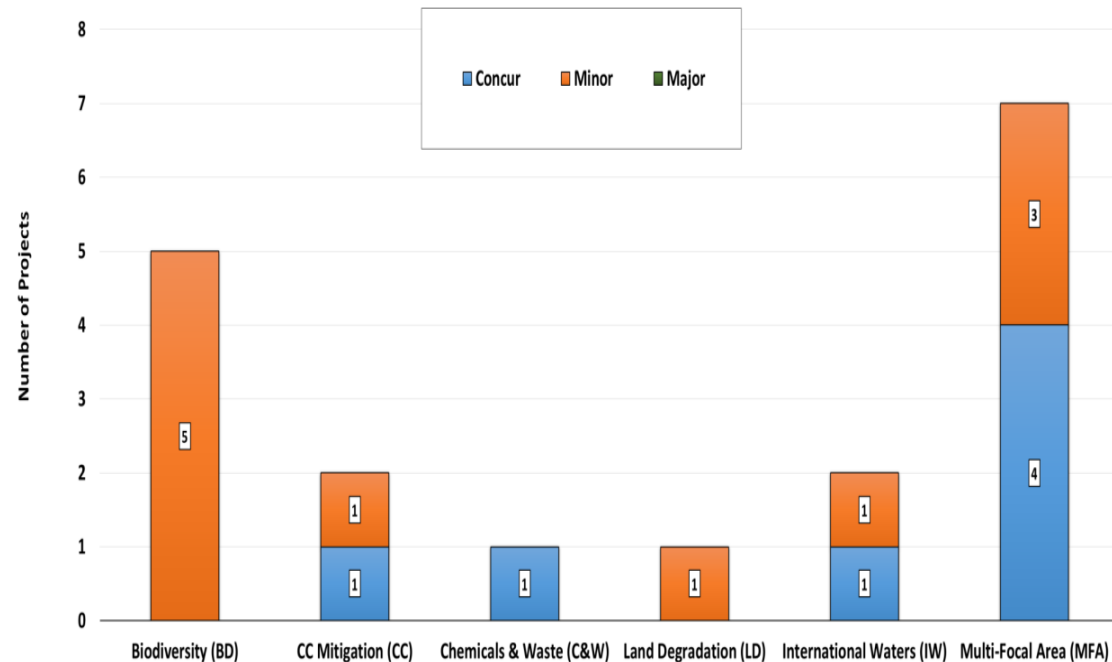
Issues for GEF Replenishment

Observations on the GEF Work Program

General Reflections on Projects

- STAP is pleased with the overall quality of projects in this work program.
- A number of multi-focal area investments are effectively addressing:
 - Landscape management
 - Adaptive management
 - Institutional capacities across sectors

STAP Recommendations for October 2016 Work Program Screens



Socio-Economic Impacts of Protected Areas

STAP, with UNDP developing practical guidance for GEF projects related to protected areas.

Evaluations by an international research team include:

- **Financial** – analysis of Park income and expenditure
- **Economic** – examines visitor spending, local employment, donations, etc.
- **Social** – focus groups to assess overall well-being (positive and negative)
- **Livelihoods** – household, governance and capital surveys



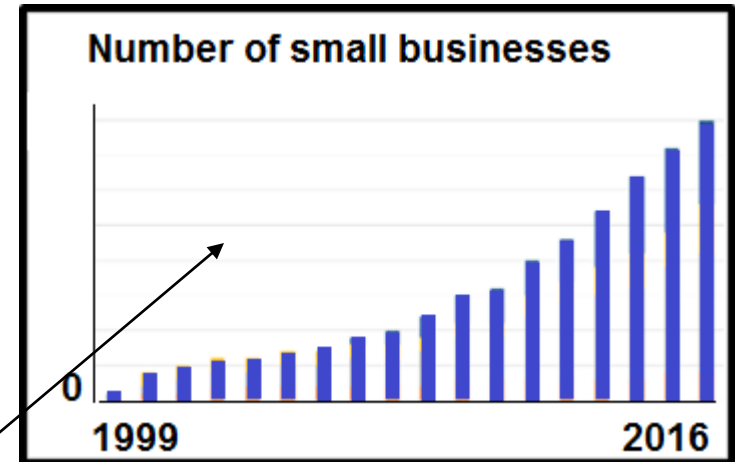
Social Assessment of Protected Areas (SAPA)



Livelihoods surveys

Parks can be engines of economic growth

- Park covers costs
- Generates \$30 m benefits



STAP is working closely with the GEF Global Wildlife Program (GWP)

- Presented at a workshop on community involvement in Illegal Wildlife Trade (IWT)
- Participated in the GWP planning meeting with initial 10 Countries
- Will further exchange knowledge on combating illegal wildlife trafficking in Hanoi
- Will review the theory of change (TOC) for all GWP child projects

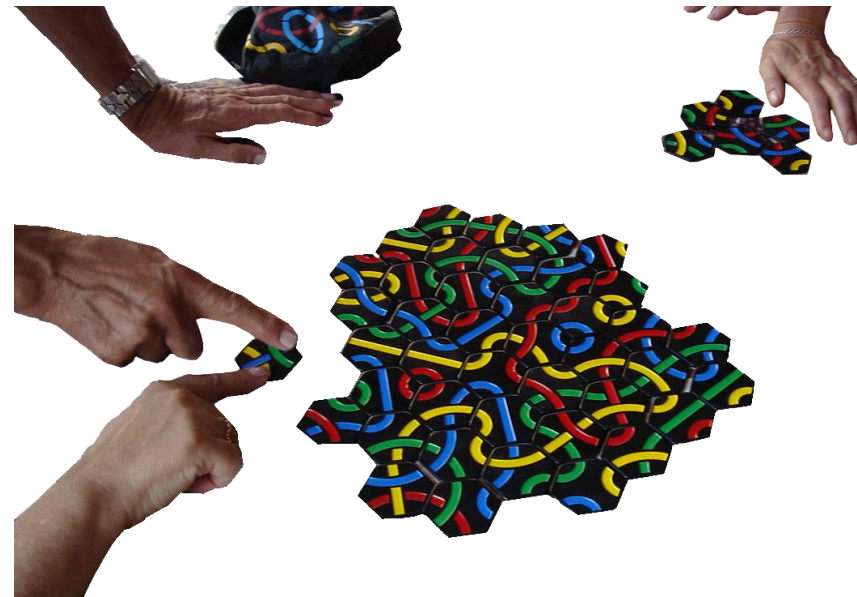
The quality of the GWP is steadily increasing as Countries and experts continue to share information and expertise



Improving Knowledge Management

The practitioner guide will help:

- Integrate KM as a key element of project “theory of change”
- Apply KM in implementation, through links to RBM and planning for key knowledge products
- Monitor and evaluate KM efforts at closure, and ensure access to knowledge assets



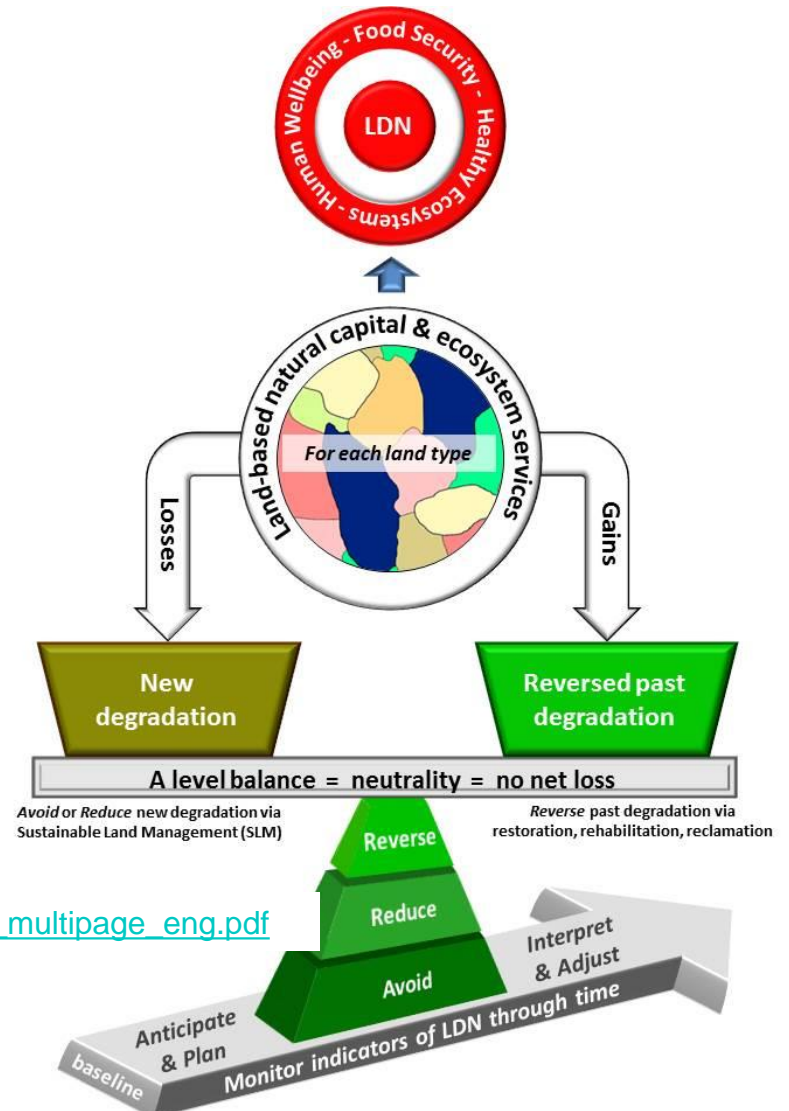
Source: Jordi G on Flickr



ENGAGEMENT WITH CONVENTIONS

UNCCD: Pursuing land degradation neutrality (LDN)

- Co-led Scientific Conceptual Framework
- The framework presents principles for countries reporting on LDN
- Science-Policy Brief released at UNCCD CRIC 15 Nairobi 18-20 October 2016



www.unccd.int/Lists/SiteDocumentLibrary/Publications/10_2016_spi_pb_multipage_eng.pdf

Mercury Platform Pilot well underway

- Created an open, virtual space for sharing of data, knowledge, and communities of practice
- Increase opportunities for peer review of data and practice among specialists, national/regional partners
- Standardized data protocols; improved ownership & transparency

<http://pre-uneplive.unep.org/theme/index/16#>

STAP

SCIENTIFIC AND TECHNICAL
ADVISORY PANEL
An independent group of scientists that advises
the Global Environment Facility



 @STAPGEF

Outline of Presentation

New STAP Reports

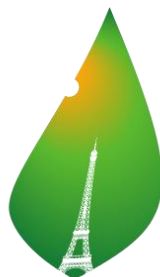
Ongoing Work

Issues for GEF Replenishment

Highlights from STAP's Report to the 5th GEF Assembly

- Environmental degradation must be tackled in a more integrated and holistic way.
- Sustainable development should be at the core of GEF interventions.
- The GEF's core business should be catalytic investments, while actively seeking to effect permanent and transformational change.

Assessing a changing global policy landscape



PARIS2015
UN CLIMATE CHANGE CONFERENCE
COP21·CMP11



UNFCCC

Convention/MEA goal or objective: To stabilize greenhouse gas concentrations "at a level that would prevent dangerous anthropogenic (human induced) interference with the climate system." It states that "such a level should be achieved within a time-frame sufficient to allow ecosystems to adapt naturally to climate change, to ensure that food production is not threatened, and to enable economic development to proceed in a sustainable manner."



Thinking Ahead to the Assembly Report

1. What opportunities arise for the GEF in the new policy landscape ?

2. How can integration be done in practice, in the context of the GEF?



3. What are key emerging issues where STAP can assist the GEF?

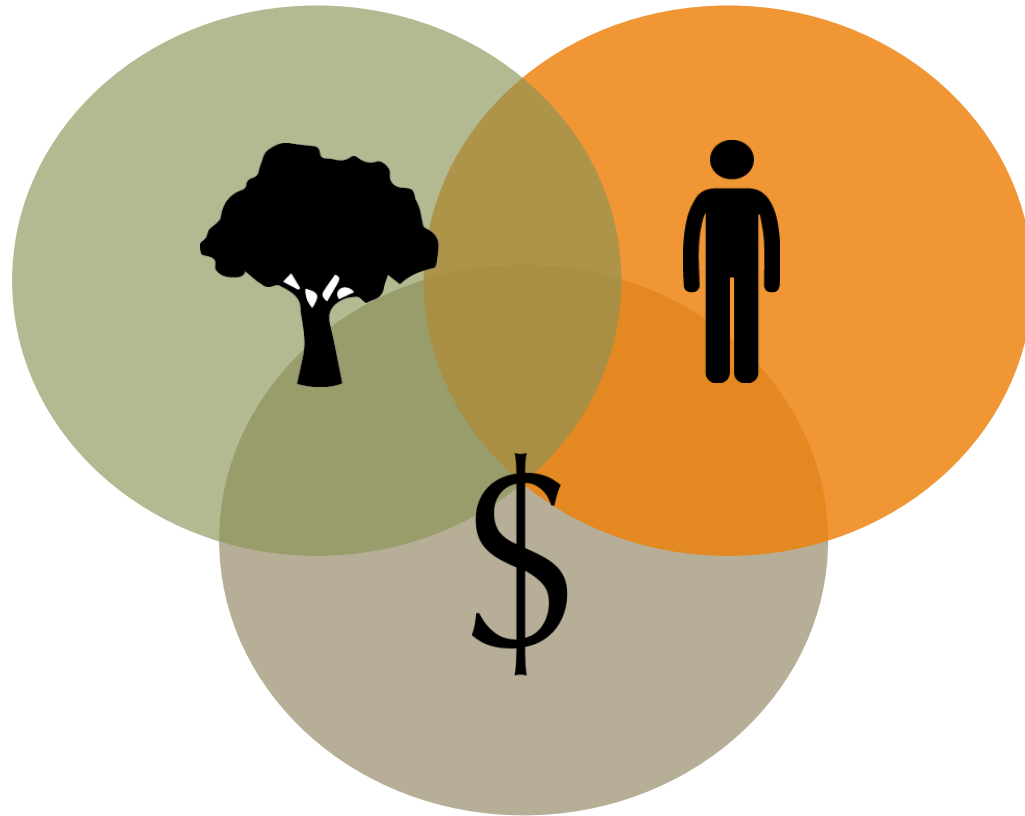
- Sustainable Consumption and Production
- Environmental Security
- Novel Entities
- Ocean Governance

Some inputs to STAP's Assembly Report 2018

- Demonstrate lessons from GEF integration across portfolio and MFAs
- GEF's unique role in financing for innovation, given the changing landscape of funding

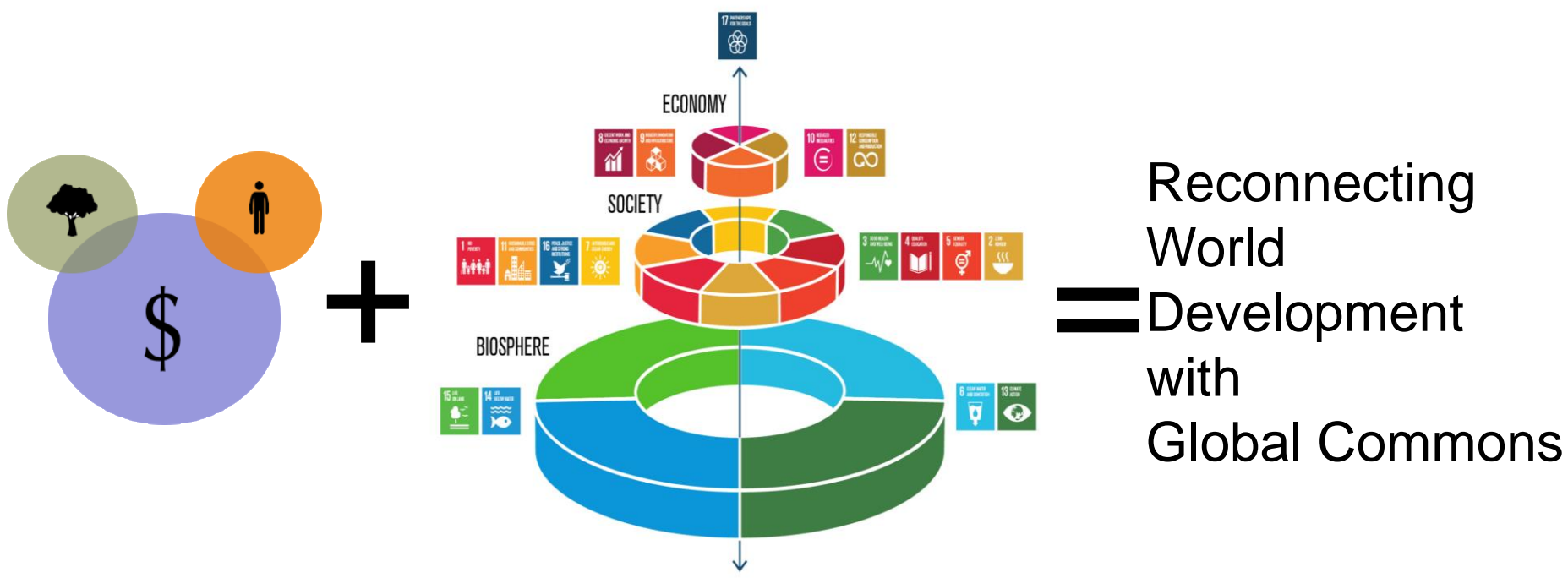


Some insights from the GEF Global Commons Meeting



Johan Rockstrom, GEF Global Commons Meeting, October 2016

Some insights from the GEF Global Commons Meeting



Johan Rockstrom, GEF Global Commons Meeting, October 2016

Good news, Bad news

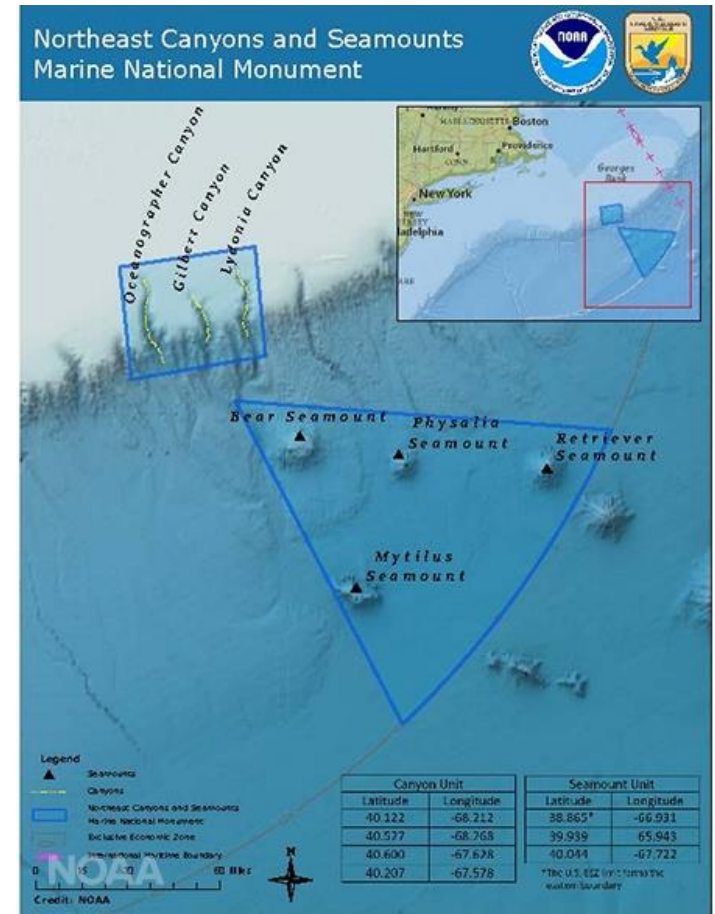
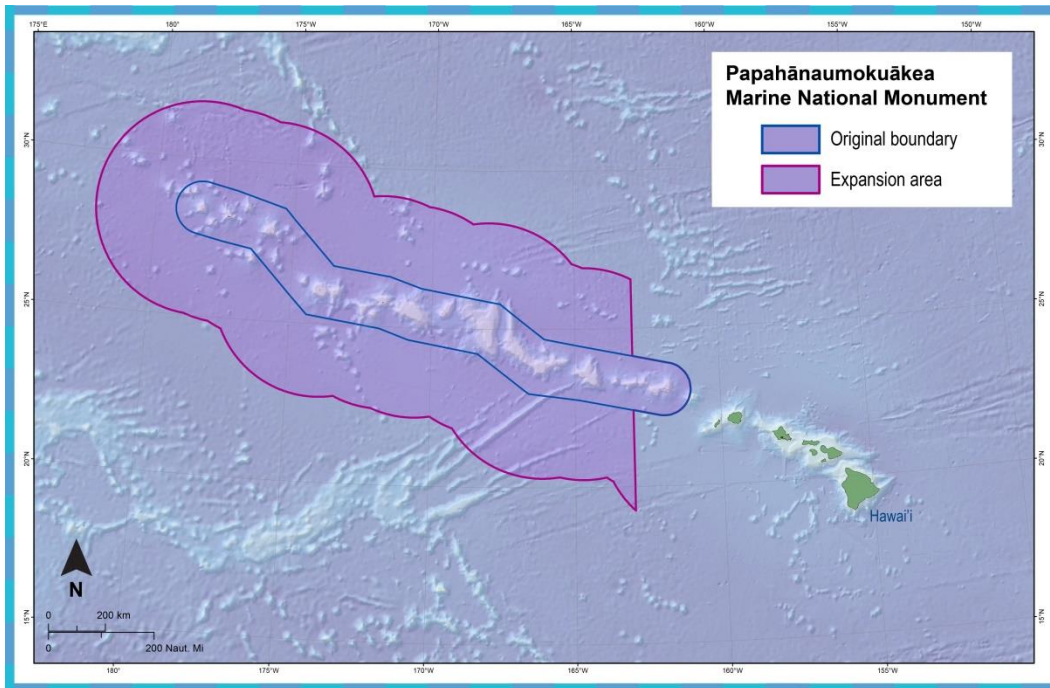


Source: Brian Gratwicke on Flickr

Good news story - Kihansi Spray Toad



And, new reserves!



Map credits: NOAA

Questions?

