



Report to the 50th Meeting of the GEF Council

STAP

SCIENTIFIC AND TECHNICAL
ADVISORY PANEL

*An independent group of scientists that advises
the Global Environment Facility*



STAP Panel Members (2016)



Michael Stocking
Senior Advisor to Chair



Rosina Bierbaum
Chair
USA



Thomas Lovejoy
Senior Advisor to Chair



Jakob Granit
International Waters
Sweden



Brian Child
Biodiversity
Zimbabwe



Ricardo Barra
Chemicals & Waste
Chile



Annette Cowie
Land Degradation
Australia



Anand Patwardhan
*Climate Change
Adaptation*
India/USA



Ralph Sims
*Climate Change
Mitigation*
New Zealand

Outline of Presentation

Integrated Approach Pilots

New STAP reports

Ongoing Work

Engagement with Conventions

Thinking ahead

Integrated Approach Pilots (IAPs)



Taking
Deforestation
out of the
Commodities
Supply Chain



Sustainable
Cities –
Harnessing
Local Action
for Global
Commons



Fostering
Sustainability
and Resilience
for Food
Security in
Sub-Saharan
Africa

Taking Deforestation out of the Commodities Supply Chain IAP

- Program level theories of change
- The importance of indicators (qualitative and quantitative)
- Widening partnerships
- Emphasizing Knowledge Management



Sustainable Cities IAP

- Broader stakeholder engagement
- Selection of indicators in progress
- There is a key role for centralized, geospatial databases to support integrated urban planning
- Link related PIFs with the IAP
Child projects for M&E



Food Security IAP

- Resilience framework used to design Ethiopia and Nigeria projects
- Resilience framework provided logical structure to understand complex context, identify causes of the system dynamics and options for action
- Adequate resources are required to assess and embed resilience thinking in projects
- Flexibility is required during project implementation to allow adaptive management



Interactive, iterative use of
“Theory of Change”

Outline of Presentation

Integrated Approach Pilots

New STAP reports

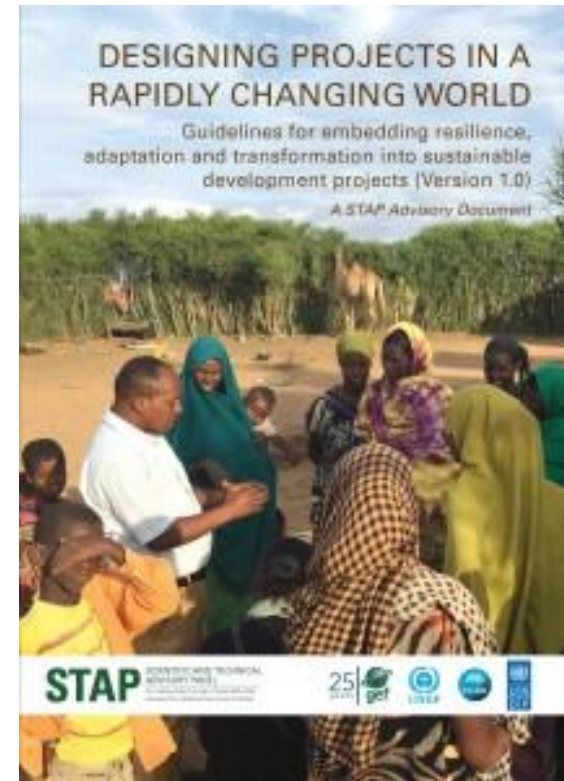
Ongoing Work

Engagement with Conventions

Thinking ahead

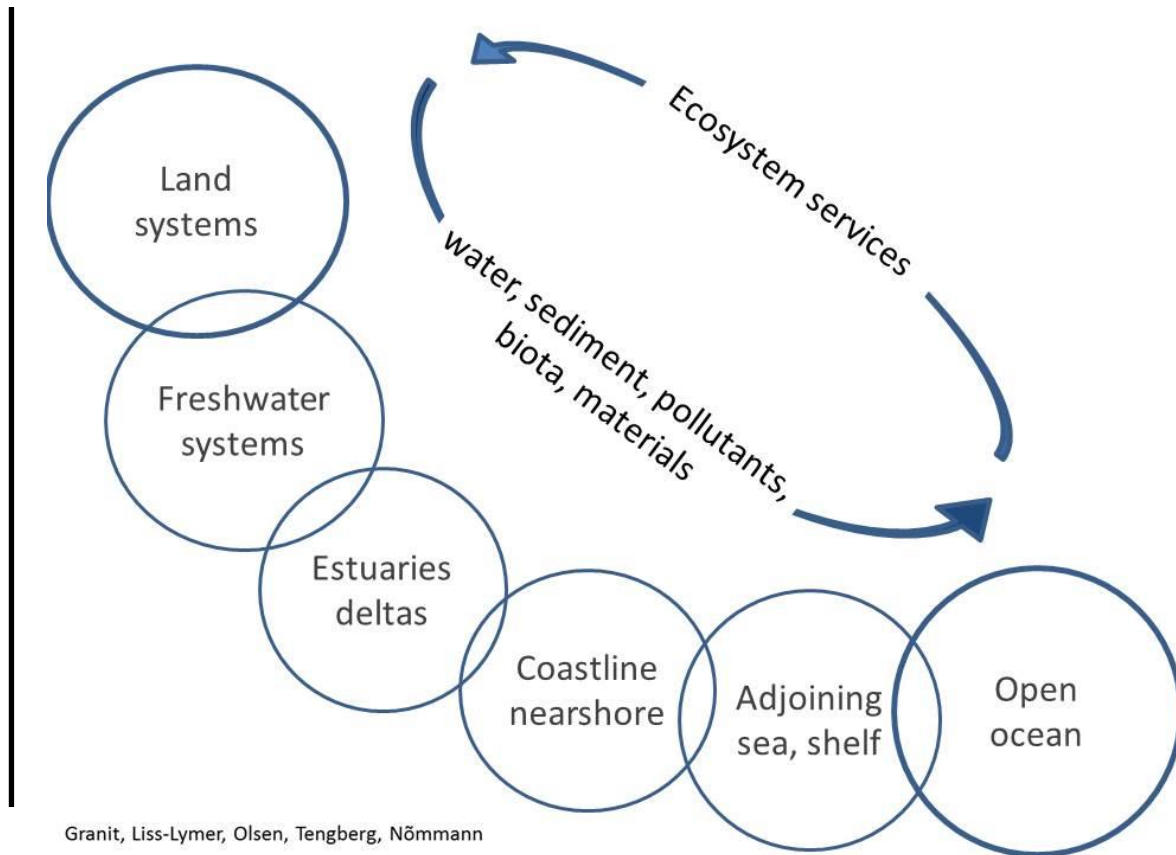
Designing Projects in a Rapidly Changing World

- The resilience framework is a tool to build resilience, adaptation and transformation into projects to ensure sustainable outcomes
- It provides project developers with practical guidance on design and implementation
- Guidelines developed especially for Food Security IAP, but applies equally to other issues across the sustainable development agenda



Governing and Managing Key Flows in a Source-to-Sea Continuum (S2S)

- Fresh, coastal zone, & marine water systems are degrading
- Segments managed in isolation
- A conceptual framework for governing & managing key flows



Recommendations to the GEF – S2S

1. Governance baseline analysis
2. Cross-sector stakeholder engagement critical in S2S system management
3. Consider S2S conceptual framework in IW MFAs
4. Invest in new knowledge generation on S2S flows & connections
 - Such as, marine debris flows



Outline of Presentation

Integrated Approach Pilots

New STAP reports

Ongoing Work

Engagement with Conventions

Thinking ahead

Updates on Selected Ongoing Work



Mercury: Fate & Movement



Green Chemistry



ABNJ



Wildlife trade



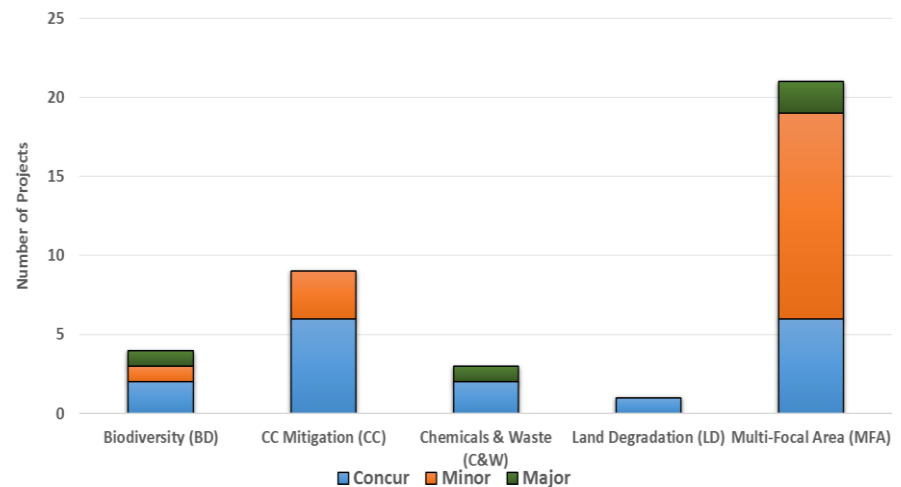
Knowledge Management

Observations on the GEF Work Program

General Reflections on Projects

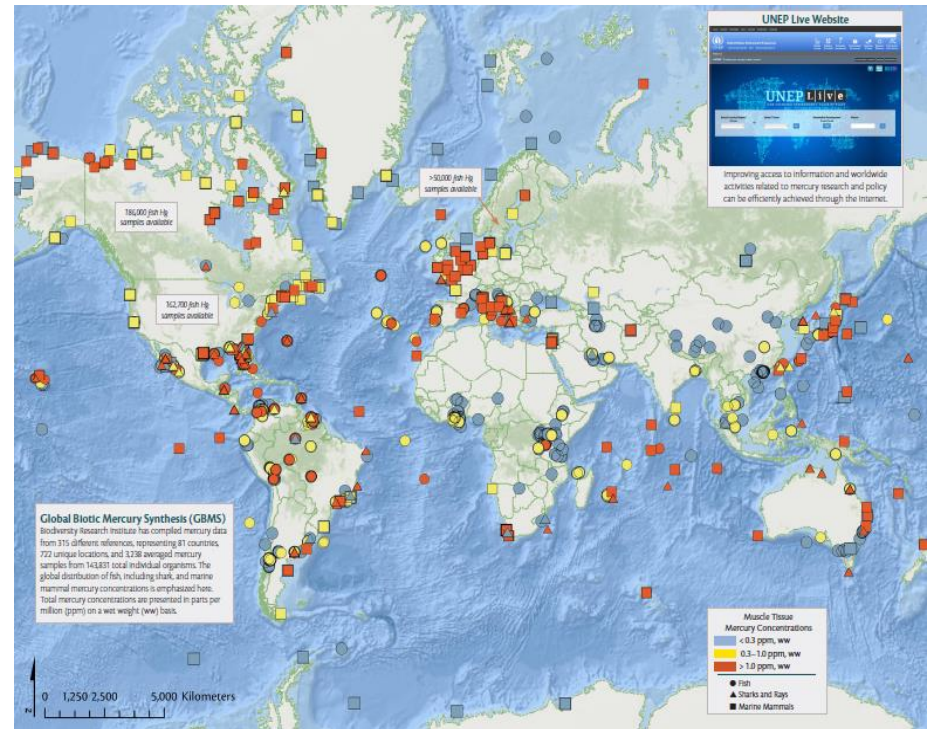
- Many PIFs lack a clear theory of change.
 - PIFs focus often on specific ‘outputs’ rather than ‘outcomes’.
- Include science base to support the choice of interventions.
- Include information on previous project experience.

STAP Recommendations for June 2016 Work Program Screens



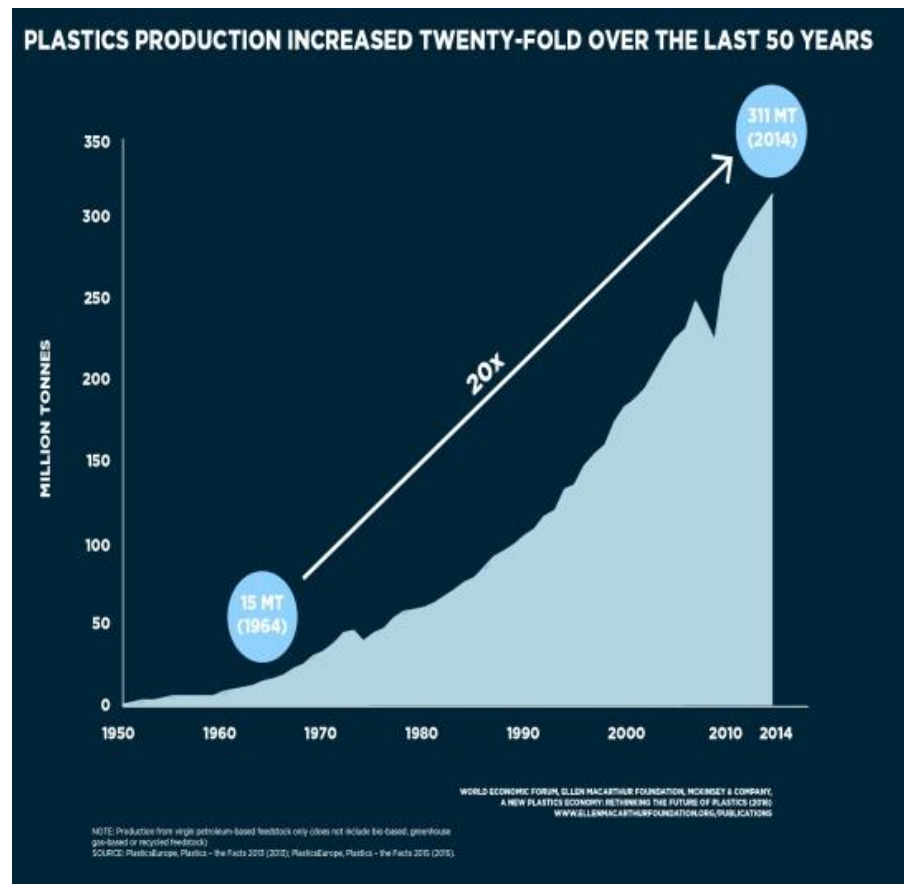
Mercury Platform

- Survey of mercury data availability for the Mercury Platform
- Pilot platform with mercury concentrations in fish
- Working with UNEP Live to accelerate data linkage process



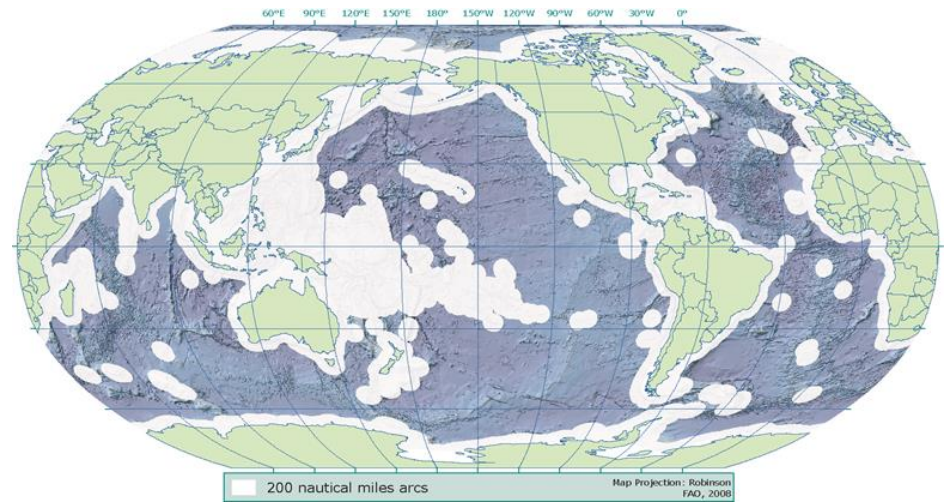
Green Chemistry

- Preparing GEF guidance document to apply Green Chemistry solutions to plastics pollution
- Forging partnerships with the private sector and sustainable chemistry community



Areas Beyond National Jurisdiction (ABNJ)

- Information paper, work in progress
- 64% of the ocean surface & 43% of world's surface
- Development interests & impacts growing
- GEF in unique opportunity to support processes to better management of the ABNJs
 - Marine ecosystem health



Global Wildlife Program

- STAP provided support to strengthen program
- Program workshops (led by the World Bank with country partners) strengthened program
- Program approach shows potential for adaptive learning



Knowledge Management (KM)

- Is more than Information Management
- Is part of a continuum from *learning* → *uptake* → *impact*
- Need a ‘learning culture’ and ‘systems thinking’
- Requires a suitable KM system



Outline of Presentation

Integrated Approach Pilots

New STAP reports

Ongoing Work

Engagement with Conventions

Thinking ahead

Engagement with Conventions

November
2015

- **UNFCCC COP21(Paris, France)**
- STAP released its new Black Carbon report at COP21.

November
2015

- **CBD SBSTTA 19 (Montreal, Canada)**
- STAP co-organized, with GEF Secretariat, a workshop to obtain input from stakeholders into methods for assessing socio-economic impacts of Protected Areas

February
2016

- **UNCCD/CBD meetings on LDN and SDG indicator 15.3 (Washington, DC)**
- STAP co-chaired the meeting aimed at identifying approaches and metrics to monitor land degradation at a global scale.

March
2016

- **7th session of the INC on Mercury (Jordan)**
- STAP was invited to participate and present in a key side event on Mercury Monitoring, observe the UNEP Mercury Partnership meetings, and attend the Global Mercury Partnership Meeting.

April
2016

- **CBD SBSTTA 20 (Montreal, Canada)**
- STAP side event entitled “Plastic debris in the ocean: From evidence to preventive action”

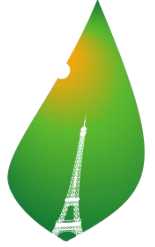
Pursuing Land Degradation Neutrality

- UNCCD's Science-Policy Interface: Conceptual Framework for Land Degradation Neutrality (LDN)
- The LDN conceptual framework underpins guidance to countries pursuing LDN targets
- STAP co-hosted expert meeting on land-based indicators for SDG 15.3



Photo: Anna Tengberg. UNEP/GEF project – Desert Margin Programme

GEF Post the Paris Climate Agreement



PARIS2015
UN CLIMATE CHANGE CONFERENCE
COP21·CMP11

- Capacity Building Initiative for Transparency (CBIT).
- GEF Adaptation LDC Fund.
- Linking relevant PIFS to the country's NDC is a logical and desirable approach that the STAP endorses.



Outline of Presentation

Integrated Approach Pilots

New STAP reports

Ongoing Work

Engagement with Conventions

Thinking ahead

Thinking Ahead to the Next GEF Program:

Recommendations from STAP's report to the 5th GEF assembly:

1. Environmental degradation must be tackled in a more integrated and holistic way.
 2. Sustainable development should be at the core of GEF interventions.
 3. The GEF should continue to be catalytic and innovative while actively seeking to effect permanent and transformational change.
-

STAP Assembly Report will address both what the GEF does and how it is done

- **What**

- Integration – across MEA's, focal areas, drivers, multiple benefits
- Innovation – experimenting, risk-taking, catalyzing



- **How**

- Learning – by doing and by diffusion; knowledge management
- Adaptive management – flexibility, programmatic approaches



Design Principles for the Future:

Enlarge scope of integration

- Place-based (e.g., S2S)
- Driver-based (e.g., market demand)
- Outcome-based (e.g., Energy - SE4All)

Explore new areas of integration

Expand approaches for integration

- Embed resilience planning into design
- Improve cross-scale governance
- Balance benefits and costs



Enhancing Impact of GEF Interventions

- Bridging the science – implementation gap
- Catalyzing action by removing barriers
- Supporting experimentation and pilots to help the diffusion of innovations



Questions?

