



# Scientific and Technical Advisory Panel Report to the 47<sup>th</sup> Meeting of the GEF Council



Scientific and Technical Advisory Panel  
of the [Global Environment Facility](#)

**Rosina Bierbaum**  
Chair, GEF-STAP





**Ralph Sims,  
CC Mitigation**



**Rosina Bierbaum,  
Chair**



**Brian Child,  
Biodiversity**



**Sandra Diaz,  
Biodiversity  
(former Panel  
Member)**

## STAP Panel Members



**Ricardo Barra,  
Chemicals & Waste**



**Anand  
Patwardhan,  
CC Adaptation**



**Jakob Granit,  
International  
Waters**



**Annette Cowie,  
Land Degradation**

# Outline of STAP's Contributions

- ❖ Roles in GEF-6
- ❖ GEF Project Cycle
- ❖ Work Program
  - Integrated Approach Pilots
  - Supporting Focal Areas
  - Knowledge Management
  - Emerging Global Environmental Issues





# STAP's Role in GEF-6

- ❖ Support the GEF transition towards greater **integration and impact.**
- ❖ Initiate focus on a limited number of **cross-cutting** strategic areas and initiatives.
- ❖ Encourage closer interaction of external **scientific and practitioner communities.**
- ❖ Continue to support **demand driven knowledge products.**



# STAP's Contribution to the GEF Project Cycle

- ❖ Continue to **screen all full-size projects at entry** into the GEF project cycle - rating as “Concur”, “Minor issues” or “Major issues”.
- ❖ Direct higher effort towards projects with **significant components of science and innovation** or with unique **methodological issues**.



# Integrated Approach Pilots (IAPs)

**STAP will contribute to the IAPs primarily through:**

- ❖ Ongoing support for **program design** including **research needs**.
- ❖ Development of **indicators** to measure success.
- ❖ Engagement with IAP technical advisory groups to support **knowledge management and learning**.

# IAP – Taking Deforestation out of Commodity Supply Chains

## Components:

- ❖ Coordination, Production, Demand, Enabling transactions & intermediaries

## STAP's role:

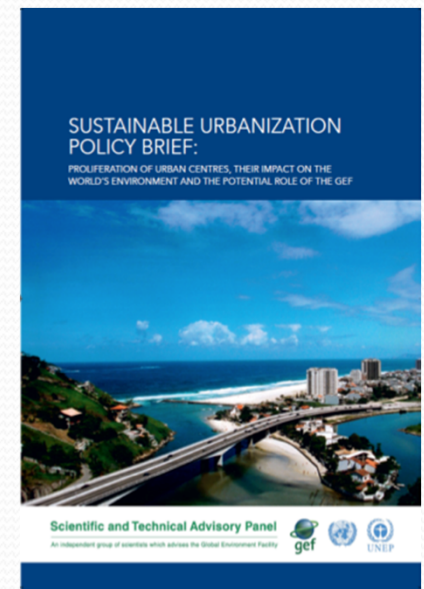
- ❖ Overall program design– review of documents
- ❖ Developing criteria for identifying and assessing the “right” areas for commodity production
- ❖ Generation of knowledge products



# IAP – Sustainable Cities: Harnessing Local Action for Global Commons

## STAP's role:

- ❖ Assess the results of the ISO 37120 20 city pilot with the Global Cities Initiative (GCI/WCCD).
- ❖ Assist in generating 5-7 indices to track sustainability status (e.g., carbon footprint per capita per year).
- ❖ Assist in the design of projects to include testing of indices in selected pilot cities.





# IAP – Sustainability and Resilience for Food Security in Sub-Saharan Africa

**Objective:** safeguarding ecosystem services for the long-term sustainability and resilience of food production systems

Relevant to:

- ❖ Managing land degradation
- ❖ Climate change mitigation and adaptation
- ❖ Biodiversity conservation
- ❖ Food security
- ❖ Sustaining livelihoods of the rural poor

STAP's role:

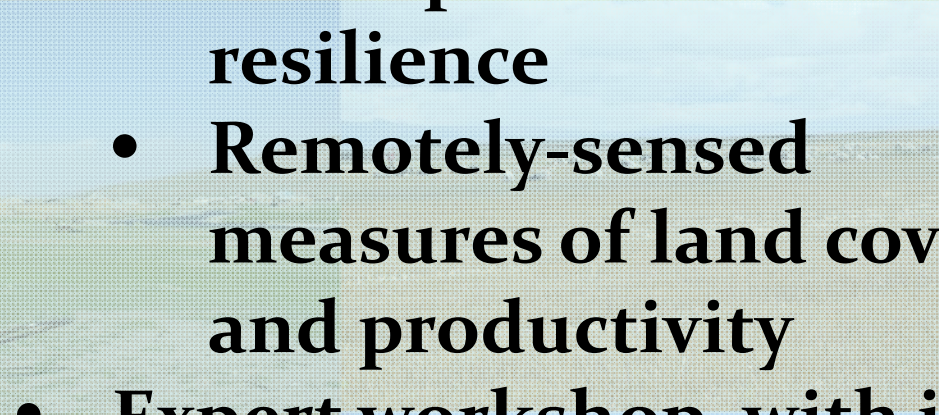
- ❖ Input on indicators for monitoring and assessment
- ❖ Identify needs and support strategic research e.g., scaling-up approaches



# Indicators of agro-ecosystem resilience

## Process to identify indicators:

- Background papers
  - Conceptual basis for resilience
  - Remotely-sensed measures of land cover and productivity
- Expert workshop, with input from Conventions



# Agro-ecosystem Resilience Indicators

- ❖ Inform Monitoring and Assessment for the IAP



- ❖ Complement the **UNCCD** progress indicators on **land cover and productivity**
- ❖ Relevant to **UNFCCC** as a measure of **land-based adaptation**, and the **CBD** as a measure of **ecosystem resilience**
- ❖ Inform review of **resource allocation** and assessment for Land Degradation focal area of the **GEF**
- ❖ Encourage integrated strategies for natural resource management

# Supporting Focal Areas

## **Biodiversity**

- ❖ PAs, Mainstreaming

## **Chemicals and Waste**

- ❖ Mercury Data Streamlining, POPs elimination, Green Chemistry

## **Mitigation**

- ❖ Black Carbon, Green House Gas Accounting

## **Adaptation**

- ❖ NAPs, M&E of adaptation investments

## **International Waters**

- ❖ Areas Beyond National Jurisdiction





## Near-term Knowledge Management tasks

- ❖ Data mining exercise of 100 completed GEF projects to develop typology of knowledge products, processes and technologies.
- ❖ Survey of knowledge management systems of GEF agencies to identify existing models & best practices.
- ❖ Propose incorporating KM outcomes into ongoing GEF IEO-led country portfolio evaluations.

**STAP plans to present preliminary results at the GEF Council meeting in June 2015.**



## Exploring Knowledge Management Opportunities

- ❖ Learning from GEF-6 for GEF-7
- ❖ Incorporate research and learning outcomes into IAPs
- ❖ Empower countries to be co-owners of the GEF's knowledge management efforts
- ❖ Encourage regional learning communities



# Upcoming Workshops

**Agro-ecosystem Resilience Indicators**

**Sydney, Australia  
November 2014**

**Minamata Convention on Mercury  
Pollution: Science for Successful  
Implementation (STAP/SETAC Workshop)**

**Vancouver, Canada  
November 2014**

**Monitoring and Evaluation for Adaptation  
(STAP/PROVIA Workshop)**

**Mumbai, India  
January 2015**

# Emerging Global Environmental Issues

- ❖ Enhance climate resilience of GEF interventions
- ❖ Environmental Security and Cooperation
- ❖ Source to Sea
- ❖ Green Chemistry





# Questions and Comments



**Rosina Bierbaum**

**Chair**

**GEF STAP**

[www.stapGEF.org](http://www.stapGEF.org)

