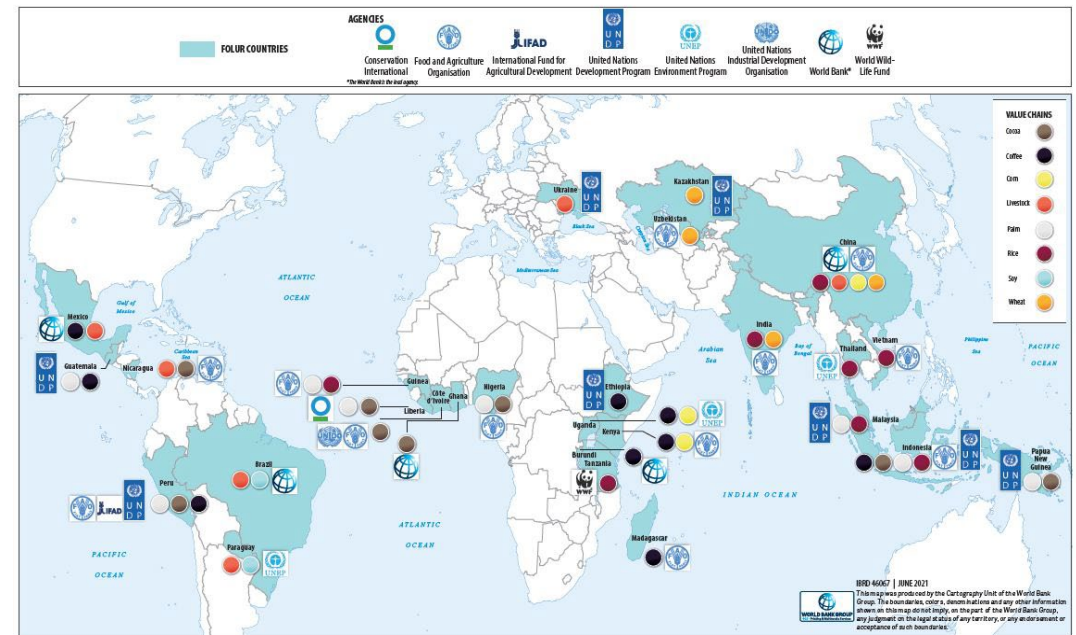


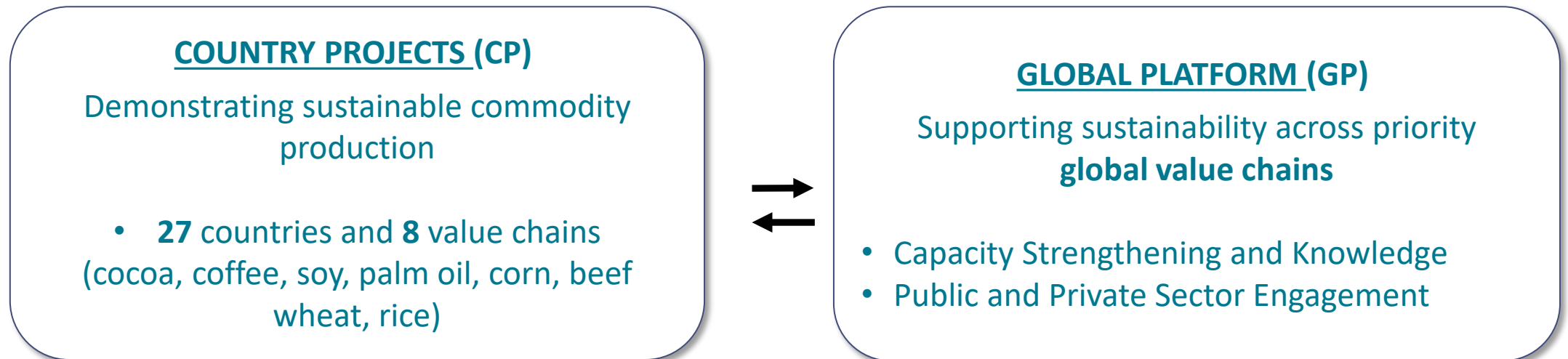
Global Platform Food Systems, Land Use and Restoration Impact Program



Gayatri Kanungo
World Bank Group
GEF/STAP Workshop, May 4, 2023

A Global Program Designed for Food Systems Transformation

Promoting sustainable, **integrated landscapes** and efficient **food value and supply chains** at scale



Expected Results

Sustainable food systems • Deforestation-free value chains • Landscape-scale restoration • Reduced externalities

Pillar A. Program Capacity Strengthening

- Strengthen capacities
- Prioritize and target TA
- Strengthen collective understanding and action

Pillar B. Policy & Value Chain Engagement

- Engage private and public sectors
- Support policy dialogue to influence investment finance
- Develop flagship studies

Pillar C. Strategic Knowledge Management & Communications

- Expand public outreach on FOLUR issues
- Oversee knowledge management & stimulate knowledge exchange
- Engage strategically in global & regional events

Pillar D: Program Management (M&E, Coordination)

- **Respond to** emerging call for action in the Food Systems space
- **Collaboratively developed** with Core Partners: partner contributions are based on experience, comparative advantage to meet the FOLUR goals
- **Establishes a coordination mechanism** for Country Projects (CPs): for reporting on collective action
- **Plans Capacity Support** for countries to enhance implementation & results capture
- **Creates a Space** for formal & informal interaction and knowledge exchange
- **Enables continuous learning** and has the ability/opportunity to adapt!

SUPPORTED BY

LED BY

IN COOPERATION WITH



- Leads FOLUR Global Platform (GP) - oversee work planning process, facilitate SC, provide context specific advisory and leverage its investment and knowledge innovations to support program goals.
- Coordination & assistance to FOLUR Core partners (delivering actions in an integrated & collaborative manner), and the Country Projects.
- Opportunity for engagement on FOLUR issues e.g commodity value chains, ILM, repurposing agricultural subsidies, PS engagement, crosscutting themes
- Outreach & awareness for global/regional engagement events (e.g. UNFCCC CoP, GLF, Food Summits, Conservation Congress, Annual Meeting).
- Establish Communications & Knowledge Management Initiatives: along with awareness & capacity raising; program reporting to GEF Sec & Partners, develop and maintain FOLUR website

Outcome: Strong Country Docking and Delivery !

Under Pillar A - WB supported CP kick-off inception workshops, developing introductory (onboarding package) & guidance materials working with GEF implementing agencies.

GGP and FAO assessing capacity needs of CPs, synthesizing results to inform tailored TA plans, strengthen FOLUR Working Groups

FAO developing sustainable finance standards for deforestation-free commodities, best practices on licensing and traceability

GGP FACS Platform delivering info & training on, collaborative action, farmer support, women's empowerment, TA in coffee PS engagement

FOLU integrating Policy Accelerator in 4 FOLUR countries, to improve incentives to restore degraded land in selected landscapes and promote financial innovations

GP bringing opportunities for Collaboration, Expansion and Influence: Engaging Across GEF Impact Programs



Global partnership on wildlife
conservation & crime prevention for
sustainable development



Amazon Sustainable Landscapes

Program: Integrated program across
participating countries for the sustainable
management of Amazon ecosystems



Enhancing long-term sustainability
and resilience for food security in
sub-Saharan Africa

Towards advancing the sustainability of Global Platforms:

- **Strengthen country voices:** CPs to build linkages, strengthen capacity, achieve scale & transformation and enable 2-way knowledge exchange (*stronger ownership*)
- **Consider links to wider government structures** (beyond CP institutions), key influential and policy making agencies (*institutionalize national commitments*)
- **Develop targeted analytics and assess long term opportunities** to advance dialogue on public, private, value chain issues (*strengthen knowledge base*)
- **Emphasis on the 'collective responsibility'** to sustain momentum ??
- **Exploring financing opportunities** for continued support to GP??
- **Finding a Common Space Repository** to enable transfer of knowledge gained??





Thank You

Visit us virtually at: <https://www.folur.org/>